



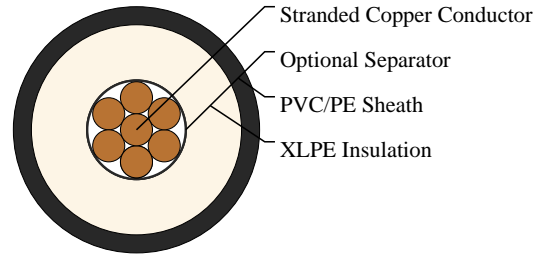
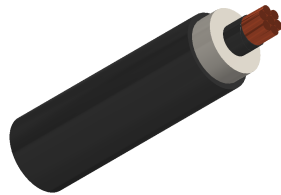
Caledonian

Airport Cables

www.caledonian-cables.com

marketing@caledonian-cables.com

FAA L-824 Type C Sheathed 5kV 1C8AWG



APPLICATIONS

These cables are used for interconnecting the transformers and the current regulator of airfield lighting systems in series circuits, suitable for fixed applications such as taxiways, runways, navigational aids, and obstruction lighting, can be installed in conduit and direct burial.

STANDARDS

FAA L-824 Type C

ICEA S-96-659/NEMA WC71

CABLE CONSTRUCTION

Conductor: Stranded bare copper to ASTM B3 and ASTM B8.

Optional Separator: Optional separator or conductor shield be applied.

Insulation: XLPE.

Sheath: PE/PVC.

PHYSICAL AND THERMAL PROPERTIES

Rated Voltage U_0/U (Um):5kV

Maximum Conductor Temperature:90°C

Short Circuit Temperature:250°C

Operating Temperatures:-40°C~+90°C

Minimum Bending Radius:static: 10×OD; dynamic: 20×OD

Impacted Resistant:Yes

Weather Resistant:Yes

DIMENSION AND PARAMETERS

Cable Constructor	No. of Strands	Nominal Insulation Thickness	Nominal Insulation Thickness	Nominal Sheath Thickness	Nominal Sheath Thickness	Approx. Overall Diameter	Approx. Overall Diameter	Approx. Weight	Approx. Weight
		in	mm	in	mm	in	mm	kg/km	LBS/MFT
1x8AWG	7	0.09	2.3	0.03	0.76	0.396	10.1	95	64